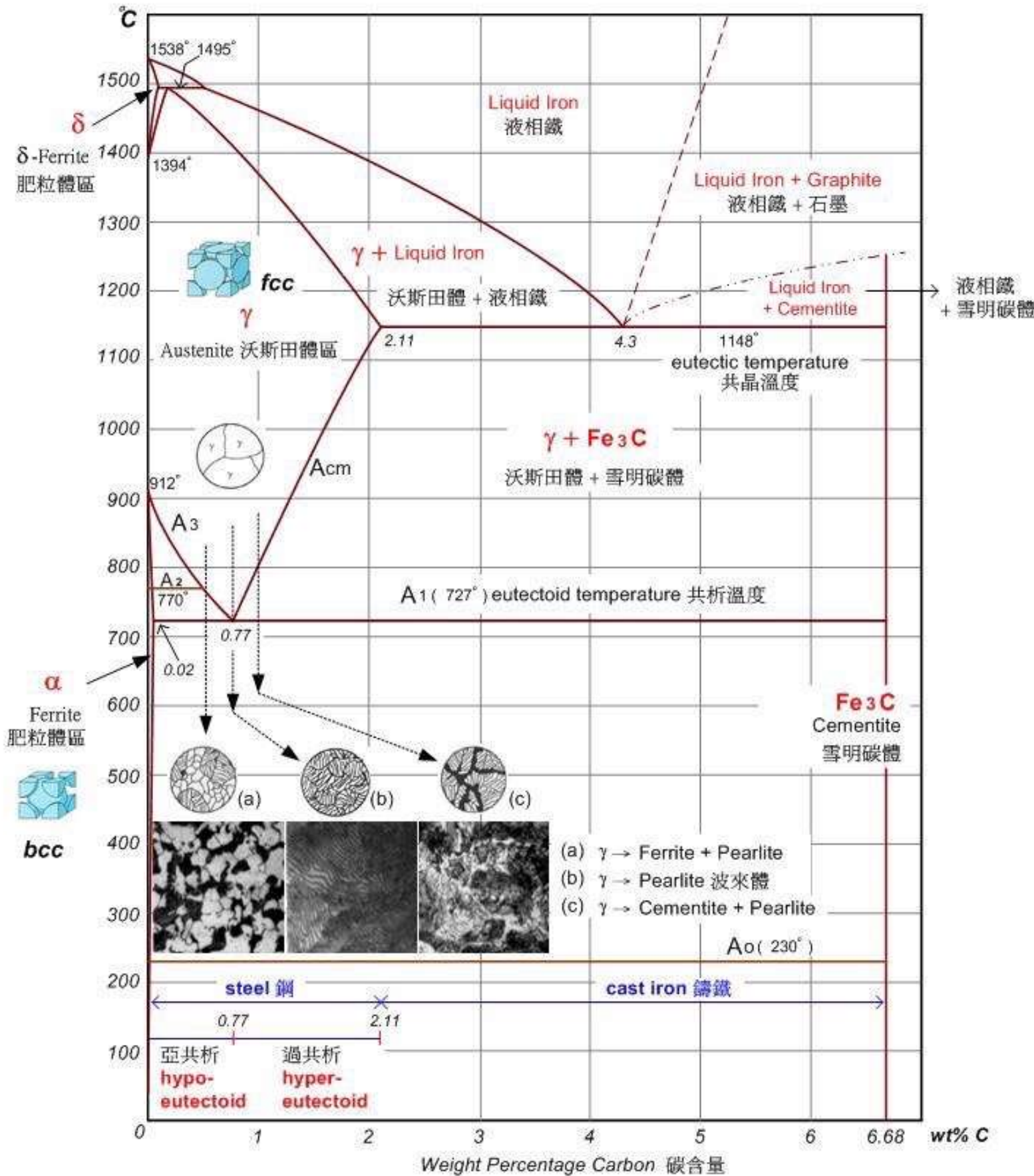


# 鐵 - 碳平衡圖 Fe - C Equilibrium Phase Diagram



$A_2$ : Magnetic point  
鐵的磁性變態點

$A_0$ : Magnetic change of  $Fe_3C$   
雪明碳體的磁性變態點

— Fe -  $Fe_3C$  Equilibrium diagram Fe -  $Fe_3C$  平衡圖

- - - Solubility of graphite in liquid Fe 液相鐵中石墨溶解度

- - - Cementite liquidus (calculated) 液相鐵中 $Fe_3C$ 溶解度 (計算值)